



Lowdell Close, Yiewsley, West Drayton, UB7 8BD

- Studio
- Part furnished
- Three piece bathroom
- EPC Rating - C
- First floor
- Available now
- Repainted

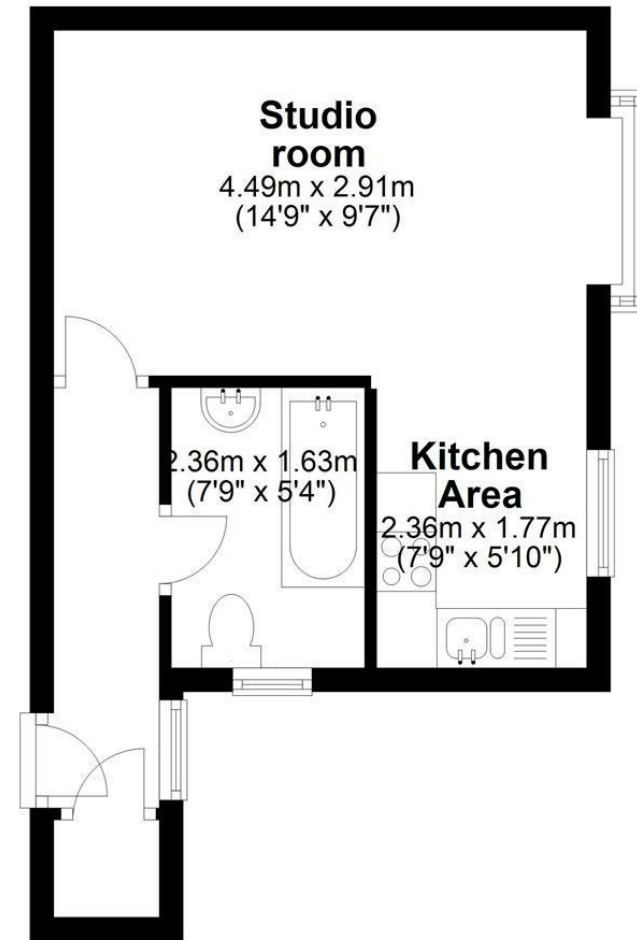
£1,050 PCM

Description

Offered for the first time, a refurbished first floor studio apartment located in a residential block, This studio boasts a brand carpets, three piece bathroom with electric power shower, ample storage, generous studio room and a fitted kitchen, fully repainted, allocated off street parking and communal gardens. Positioned within easy reach of Hillingdon hospital, perfect for a single or couple and available NOW

First Floor

Approx. 26.2 sq. metres (281.9 sq. feet)



Total area: approx. 26.2 sq. metres (281.9 sq. feet)

IMPORTANT NOTICE

These particulars have been prepared upon information supplied by the Vendor and should be verified by your surveyors and solicitors. We have prepared these sales particulars as a general guide to give a broad description of the property. They are not intended to constitute part of an offer or contract. We have not carried out a structural survey and the services, appliances and specific fittings have not been tested. All photographs, measurements, floor plans and distances referred to are given as a guide only and should not be relied upon for the purchase of carpets or any other fixtures or fittings. Lease details service charge and ground rent (where applicable) are given as a guide only and should be checked and confirmed by your solicitor prior to exchange of contracts